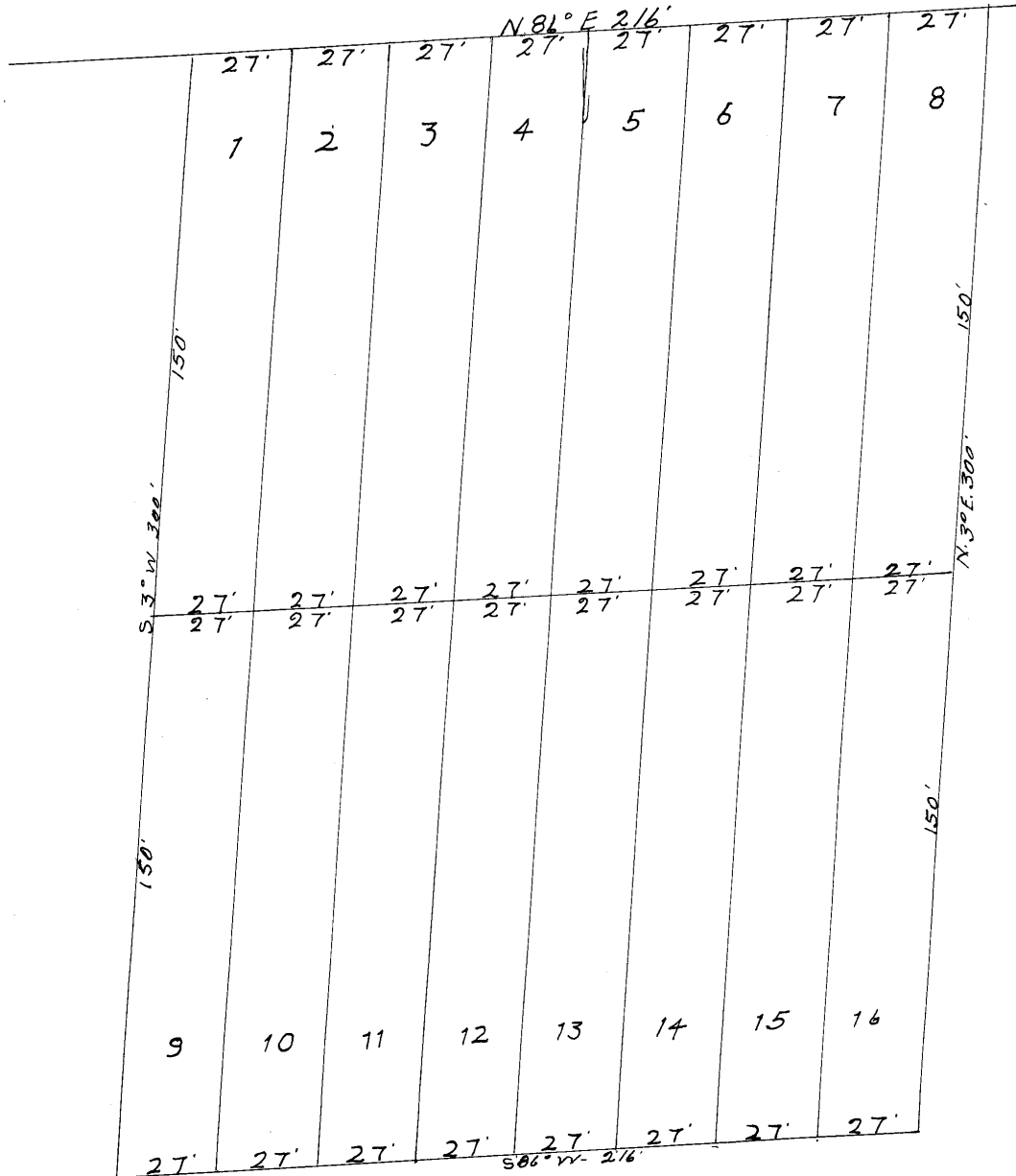


HIGHWAY NO. 42



EARLEY LANE, SUBDIVISION, NO. 1
 SCALE 1" = 30'. MAY, 15-1952
 A.H. CRAWFORD, SURVEYOR.

STATE OF TENNESSEE PUTNAM COUNTY
 File May 22 1952 2:30 o'clock
M. and noted in Filation Book.....on page
 and recorded in Book...63...on page
253
Allie Loftis Register

127519