

Certificate of Ownership and Dedication
 I (we) hereby certify that I (we) are the owner(s) of the property shown and described hereon and that I (we) hereby adopt this plan of subdivision with my (our) free consent, establish the minimum building restrictions, lines, and dedicate all streets, alleys, sidewalks, and parks and open spaces to public or private use as noted.

7-12-97
 Date Signed

R.P. Brantley
 Owner's Signature

Certificate of Property Address
 I hereby certify that the subdivision as shown hereon and properties thereon have been assigned addresses as per the Putnam County Street Naming and Property Numbering System, and that hereafter properties shown on this subdivision as shown hereon.

7/10/97
 Date Signed

[Signature]
 E-11 District
 Putnam County
 Tennessee

Certificate of Approval of Power Easements
 I hereby certify that acceptable power easements are in place meeting the requirements of the Upper Cumberland Electric Membership Corp.

7/10/97
 Date Signed

[Signature]
 Manager, UCEMC

Certificate for Water Supply
 I hereby certify that upon registration of this plat, that the City of ... Quality District will operate and maintain the water supply system installed to serve the property herein subdivided.

Date Signed

[Signature]
 Signature of Water Dept. Superintendent or Water Utility District Representative

Certificate of Approval of Streets and Utilities
 I hereby certify that all streets, utilities, and other improvements have been installed in acceptable manner and according to the county specifications or, (2) that a security bond in the amount of \$10,000.00 has been posted with the planning commission to assure completion of all required improvements in case of default.

Date Signed

[Signature]
 County Planning Commission
 Engineer

Certificate of Approval for Recording
 I hereby certify that the subdivision plat shown hereon has been found in conformity with the Subdivision Standards for Putnam County, Tennessee, with the exception of such variances, if any, as are noted on the official minutes of the Planning Commission, and that said plat has been approved for recording in the Office of the Register of Deeds of Putnam County, Tennessee.

Date Signed

[Signature]
 Secretary
 Planning Commission

Certificate of Accuracy and Precision
 I hereby certify that the plan shown and described hereon is a true and correct survey in the accuracy required by the Putnam County Regional Planning Commission and that the monuments have been placed as shown hereon, to the specifications of the Putnam County Regional Planning Commission.

7-12-97
 Date Signed

[Signature]
 Registered Land Surveyor
 Tennessee # 260

Approved as to construction of all structures, mobile or permanent, the plat for the street layout/structure location must be approved and an "S" stamp placed thereon by the Division of Ground Water Protection. Water taps, water lines, underground utilities and structures shall be located at the property lines unless otherwise noted.

7-12-97
 Date Signed

[Signature]
 Division of Ground Water Protection

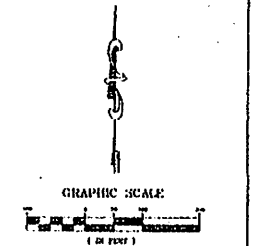
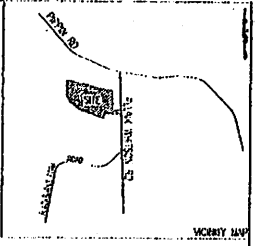
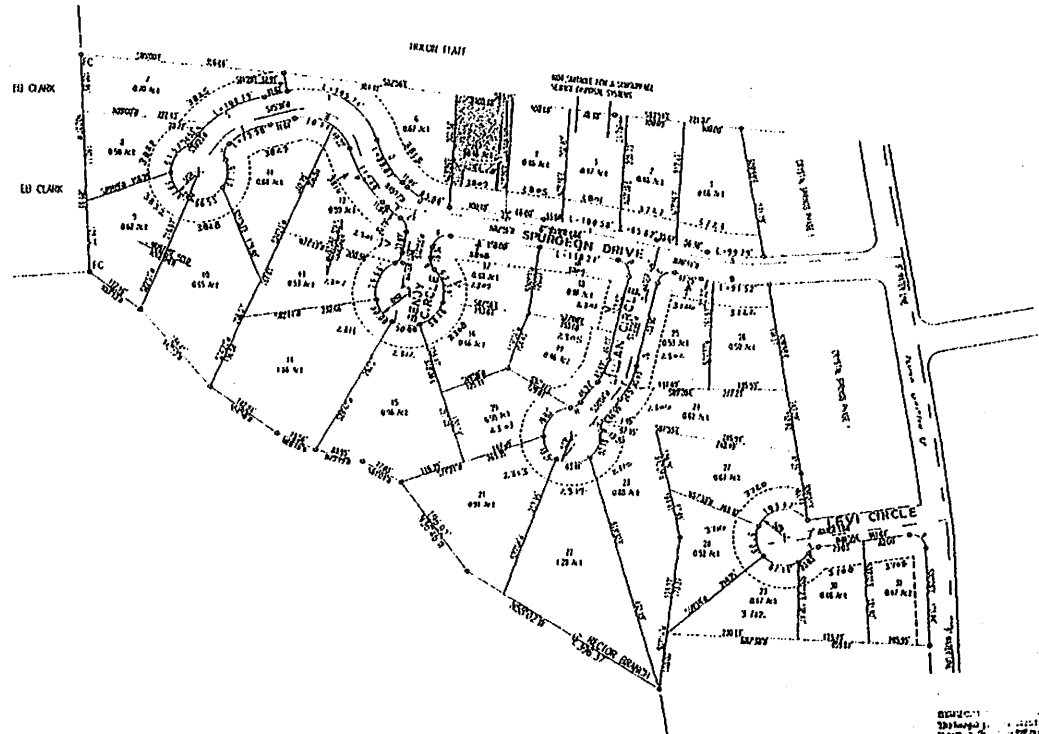
RESIDENCE
 LOTS 1-31 ARE APPROVED WITH INSTALLATION AND DEDICATION OF CONVENTIONAL SEWERAGE SYSTEM TO SERVE THE LOT. SEE PLAT FOR LOCATION OF SEWERAGE SYSTEM. SEE PLAT FOR LOCATION OF SEWERAGE SYSTEM. SEE PLAT FOR LOCATION OF SEWERAGE SYSTEM.

SEWER LOTS
 SEWER LOTS MAY REQUIRE PUMP SYSTEMS TO TRANSPORT SEWAGE FROM AREAS OF THE LOT WITH ELEVATED LOT ELEVATIONS TO THE SEWERAGE SYSTEM.

SHEDDING
 SHEDDING ON SEWER LOTS REQUIRES AN AREA NEARBY TO BE USED FOR THE INSTALLATION OF THE STORAGE AND DEDICATION OF SUBSURFACE SEWERAGE SYSTEMS, AND SHALL BE USED FOR THE PURPOSES SUCH AS MOBILE LOCATION, HIGH STIMULUS LOCATION, BURNED AREA, DISPERSED, SHEDDING, POLLS, ETC. IN ANY CASE, SHEDDING SHALL BE IN ACCORDANCE WITH THE REGULATIONS OF THE SEWERAGE SYSTEM. TO REMAIN, INDICATION OF THE SHEDDING AREA MAY BE CONTAINED, PROVIDED APPROPRIATE SHEDDING AREA IS MAINTAINED.

SEWER
 SEWER LOTS WILL REQUIRE THE INSTALLATION OF A SEWERAGE SYSTEM FOR THE INSTALLATION OF THE SEWERAGE SYSTEM. THERE IS TO BE NO CONSTRUCTION OF ANY TYPE IN THE SEWERAGE SYSTEM EASEMENT AREA.

NOTES
 LOTS 1-31 ARE APPROVED FOR USE WITH UTILITY WATER LINES. ALL UNDERGROUND UTILITIES AND DRIVEWAYS MUST ENTER ALONG PROPERTY LINES.



- SHEDDING RESTRICTIONS**
- 1) ALL HOOD PARADES TO BE 6'10" OR GREATER
 - 2) ALL EXPOSED BLOCKS TO BE PAINTED WITH BLACK OR RED
 - 3) ALL EXPOSED BLOCKS TO HAVE BLACK, WHITE, AND OR RED
 - 4) NO CARS TO BE PARKED OVER TWENTY (20) INCHES FROM IS NOT ROAD WIDTH
 - 5) AT LEAST TEN (10) EMBROIDERED STRIPS PER PARADE
 - 6) TWO (2) FEET (10) FEET SHEDDING PER PARADE
 - 7) ALL COUNTRIES TO COMPLY WITH SHEDDING RESTRICTIONS
 - 8) ALL HOMES TO HAVE 1200 SQUARE FEET HEATED SPACE

LOT	AREA	AREA	AREA	AREA	AREA	AREA	AREA
1	1200	1200	1200	1200	1200	1200	1200
2	1200	1200	1200	1200	1200	1200	1200
3	1200	1200	1200	1200	1200	1200	1200
4	1200	1200	1200	1200	1200	1200	1200
5	1200	1200	1200	1200	1200	1200	1200
6	1200	1200	1200	1200	1200	1200	1200
7	1200	1200	1200	1200	1200	1200	1200
8	1200	1200	1200	1200	1200	1200	1200
9	1200	1200	1200	1200	1200	1200	1200
10	1200	1200	1200	1200	1200	1200	1200
11	1200	1200	1200	1200	1200	1200	1200
12	1200	1200	1200	1200	1200	1200	1200
13	1200	1200	1200	1200	1200	1200	1200
14	1200	1200	1200	1200	1200	1200	1200
15	1200	1200	1200	1200	1200	1200	1200
16	1200	1200	1200	1200	1200	1200	1200
17	1200	1200	1200	1200	1200	1200	1200
18	1200	1200	1200	1200	1200	1200	1200
19	1200	1200	1200	1200	1200	1200	1200
20	1200	1200	1200	1200	1200	1200	1200
21	1200	1200	1200	1200	1200	1200	1200
22	1200	1200	1200	1200	1200	1200	1200
23	1200	1200	1200	1200	1200	1200	1200
24	1200	1200	1200	1200	1200	1200	1200
25	1200	1200	1200	1200	1200	1200	1200
26	1200	1200	1200	1200	1200	1200	1200
27	1200	1200	1200	1200	1200	1200	1200
28	1200	1200	1200	1200	1200	1200	1200
29	1200	1200	1200	1200	1200	1200	1200
30	1200	1200	1200	1200	1200	1200	1200
31	1200	1200	1200	1200	1200	1200	1200

NOTES
 WEST VECTOR BRANCH IS SHOWN IN A FLOOD PLAN ACCORDING TO FLOOD HAZARD BOUNDARY MAP #1401490003A DATED OCT. 21, 1977. EPOCH OF CLOSURE-1:10,000 (CATEGORY 1)

LEGEND
 7X FIRE HYDRANT
 12" FIRE HYDRANT
 12" FIRE HYDRANT

REVISIONS
 1. 7/10/97
 2. 7/10/97
 3. 7/10/97
 4. 7/10/97
 5. 7/10/97
 6. 7/10/97
 7. 7/10/97
 8. 7/10/97
 9. 7/10/97
 10. 7/10/97
 11. 7/10/97
 12. 7/10/97
 13. 7/10/97
 14. 7/10/97
 15. 7/10/97
 16. 7/10/97
 17. 7/10/97
 18. 7/10/97
 19. 7/10/97
 20. 7/10/97
 21. 7/10/97
 22. 7/10/97
 23. 7/10/97
 24. 7/10/97
 25. 7/10/97
 26. 7/10/97
 27. 7/10/97
 28. 7/10/97
 29. 7/10/97
 30. 7/10/97
 31. 7/10/97
 32. 7/10/97
 33. 7/10/97
 34. 7/10/97
 35. 7/10/97
 36. 7/10/97
 37. 7/10/97
 38. 7/10/97
 39. 7/10/97
 40. 7/10/97
 41. 7/10/97
 42. 7/10/97
 43. 7/10/97
 44. 7/10/97
 45. 7/10/97
 46. 7/10/97
 47. 7/10/97
 48. 7/10/97
 49. 7/10/97
 50. 7/10/97
 51. 7/10/97
 52. 7/10/97
 53. 7/10/97
 54. 7/10/97
 55. 7/10/97
 56. 7/10/97
 57. 7/10/97
 58. 7/10/97
 59. 7/10/97
 60. 7/10/97
 61. 7/10/97
 62. 7/10/97
 63. 7/10/97
 64. 7/10/97
 65. 7/10/97
 66. 7/10/97
 67. 7/10/97
 68. 7/10/97
 69. 7/10/97
 70. 7/10/97
 71. 7/10/97
 72. 7/10/97
 73. 7/10/97
 74. 7/10/97
 75. 7/10/97
 76. 7/10/97
 77. 7/10/97
 78. 7/10/97
 79. 7/10/97
 80. 7/10/97
 81. 7/10/97
 82. 7/10/97
 83. 7/10/97
 84. 7/10/97
 85. 7/10/97
 86. 7/10/97
 87. 7/10/97
 88. 7/10/97
 89. 7/10/97
 90. 7/10/97
 91. 7/10/97
 92. 7/10/97
 93. 7/10/97
 94. 7/10/97
 95. 7/10/97
 96. 7/10/97
 97. 7/10/97
 98. 7/10/97
 99. 7/10/97
 100. 7/10/97

FOR FILE

COPYRIGHT OFFENSES PHASE III

NO.	DATE	DESCRIPTION	AMOUNT
1			
2			
3			
4			
5			
6			
7			
8			
9			
10			
11			
12			
13			
14			
15			
16			
17			
18			
19			
20			
21			
22			
23			
24			
25			
26			
27			
28			
29			
30			
31			
32			
33			
34			
35			
36			
37			
38			
39			
40			
41			
42			
43			
44			
45			
46			
47			
48			
49			
50			
51			
52			
53			
54			
55			
56			
57			
58			
59			
60			
61			
62			
63			
64			
65			
66			
67			
68			
69			
70			
71			
72			
73			
74			
75			
76			
77			
78			
79			
80			
81			
82			
83			
84			
85			
86			
87			
88			
89			
90			
91			
92			
93			
94			
95			
96			
97			
98			
99			
100			