

RAIN
OR
SHINE

RAIN
OR
SHINE

JACKSON COUNTY

2 BANKRUPTCY AUCTIONS

AFTERNOON SALE!!
Attention Investors.,
Builders

THURSDAY AUGUST 5 4 PM

LOCATION: 511 Elm St., Gainesboro. From the intersection of Hwy. 53 & Hwy. 56 in Gainesboro, take Hwy. 56 (Grundy Quarles Hwy. S.), turn left on School Dr., Left on Elm St. See auction signs.

★ **House & 2.35 Ac+/-** ★



This brick home with basement features: Main Level...three bedrooms, two baths, kitchen, dining room, living room. Basement...one bedroom, bath, kitchen, living room.

- ◆ Hardwood floors
- ◆ CH&A (gas heat)
- ◆ Vinyl replacement windows
- ◆ 2 covered porches

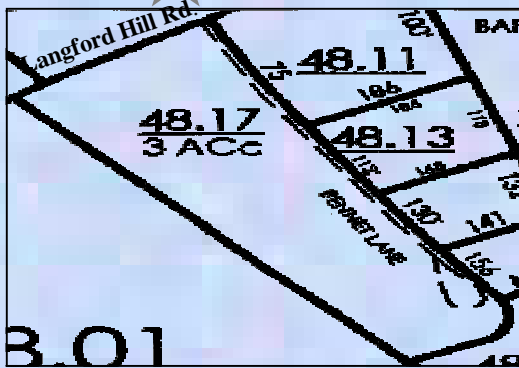
For more information contact
Eddie Stout 615-418-4379

PLAT ON BACK

THURSDAY AUGUST 5 6 PM

Location: Lankford Hill Rd., Cookeville. From Gainesboro, take Hwy. 53, 1.4 mi., Right on Hwy. 135 (Dodson Br. Rd.), approx. 12 mi., Right on Lankford Hill Rd. From Cookeville take Hwy 135 North. See Auction Signs.

★ **Super Choice 3 Ac+/- Tract** ★



- ◆ Wooded Lot
- ◆ Choice building Lot
- ◆ Close to Dodson Branch Elementary School.

Selling by order of John C. McLemore, Trustee U.S. Bankruptcy Court Mid. Tn. District. Case # 09-04957, 08-02518

Terms: R.E: 20% Down day of sale and balance due at court confirmation.

Announcements made day of sale take precedence over previously printed matter. Information believed to be correct but not guaranteed.

www.taysauctions.com

1546 E SPRING ST STE B
COOKEVILLE TN 38506
(931) 526-2307

TAYS

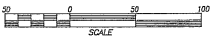
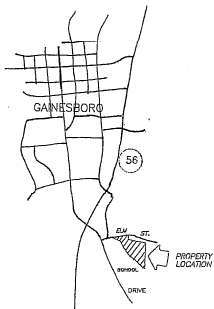
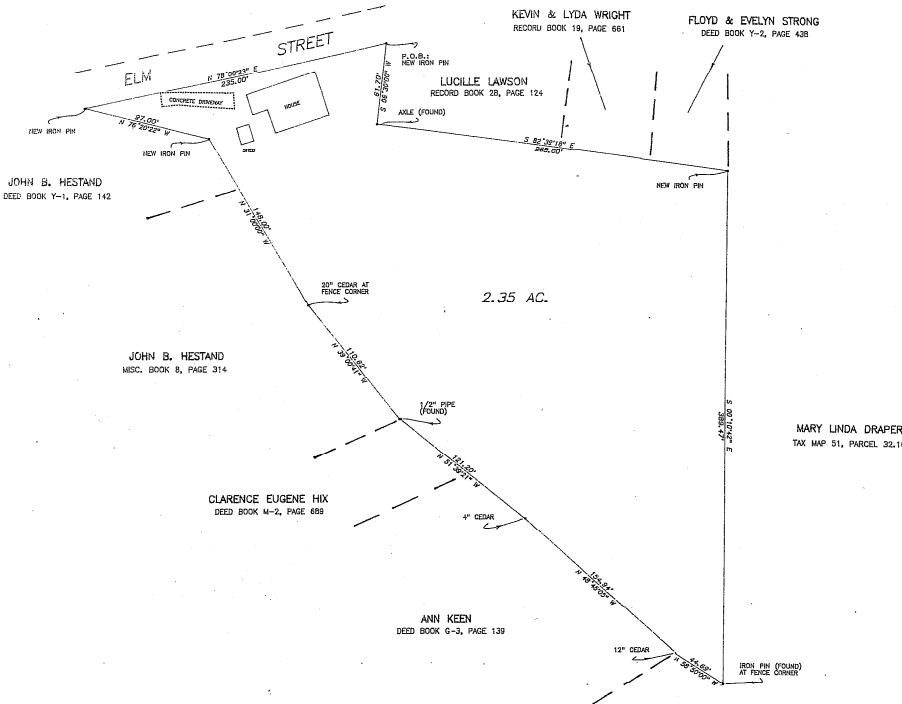
REALTY & AUCTION LLC

"AUCTIONS MEAN ACTION"



Firm LIC. #2056
Auct. LIC. #1013

Survey for 4 PM sale on 511 Elm St.



CERTIFICATE OF ACCURACY
 I HEREBY CERTIFY THAT THIS IS A CATEGORY 1 SURVEY AND THE RATIO OF PRECISION OF THE UNADJUSTED SURVEY IS 11 - 0.0000. AS SHOWN HEREON, PROPERTY IS SUBJECT TO ANY EASEMENTS OR ENCUMBRANCES THAT ARE OF PUBLIC RECORD.
Charles J. Wiggins Jr.



VICINITY MAP SCALE: 1" = 1000'

REGINA R. STAFFORD		DRAWN BY: MCD	
1ST CIVIL DISTRICT • JACKSON CO., TN.		REVISION:	
SCALE: 1" = 50'	APPROVED BY: JR		
DATE: 3-29-10			
DEED REFERENCE: RECORD BOOK 49, PAGE 729, R.O.J.C.T. TAX MAP 51P, GROUP "G", PARCEL 12.01			
WIGGINS SURVEYING P.O. BOX 191, GAINESBORO, TN (931) 269-9215		DRAWING NUMBER STAFFORD	