

RAIN
OR
SHINE

RAIN
OR
SHINE

NORTH COOKEVILLE

COURT AUCTION

LOCATION: 1001 Post Oak Rd.
From the intersection of N.
Washington & E. 10th St., go N on
Washington Ave. 3.2 mi.
See auction signs on right.

The Estate of Zelon Phillips

SATURDAY

APRIL 24

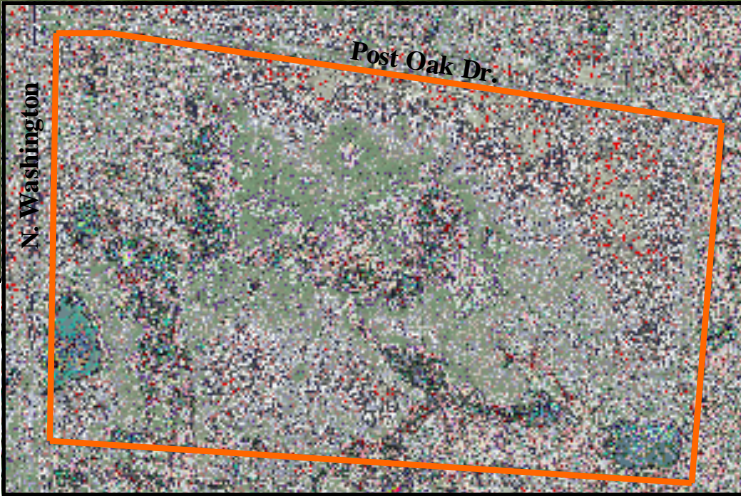
10AM



13.45 Ac +/- in 3 Tracts



Location, Location, Location...



- ◆ Tracts range in size from 3.31 to 5.07 Ac±
- ◆ Near Cookeville High School.
- ◆ Minutes to Downtown Cookeville, Hwy. 111 & I-40.
- ◆ Light Restrictions.
- ◆ City water available.
- ◆ Level and Ready to Build on.

Plat on Back



Auctioneer's Note: This is a super choice piece of property that could not be more perfectly located with lots of potential. Suited for just about anything. Be sure to check it out before the sale and be ready to buy at **Auction!**

Terms: 20% down day of sale, balance due upon court confirmation.

Attorney: W.I. Howell Acuff 526-6123

Announcements made day of sale take precedence over previously printed matter. Information believed to be correct but not guaranteed.

1546 E SPRING ST STE B
COOKEVILLE TN 38506

(931) 526-2307

www.taysauctions.com

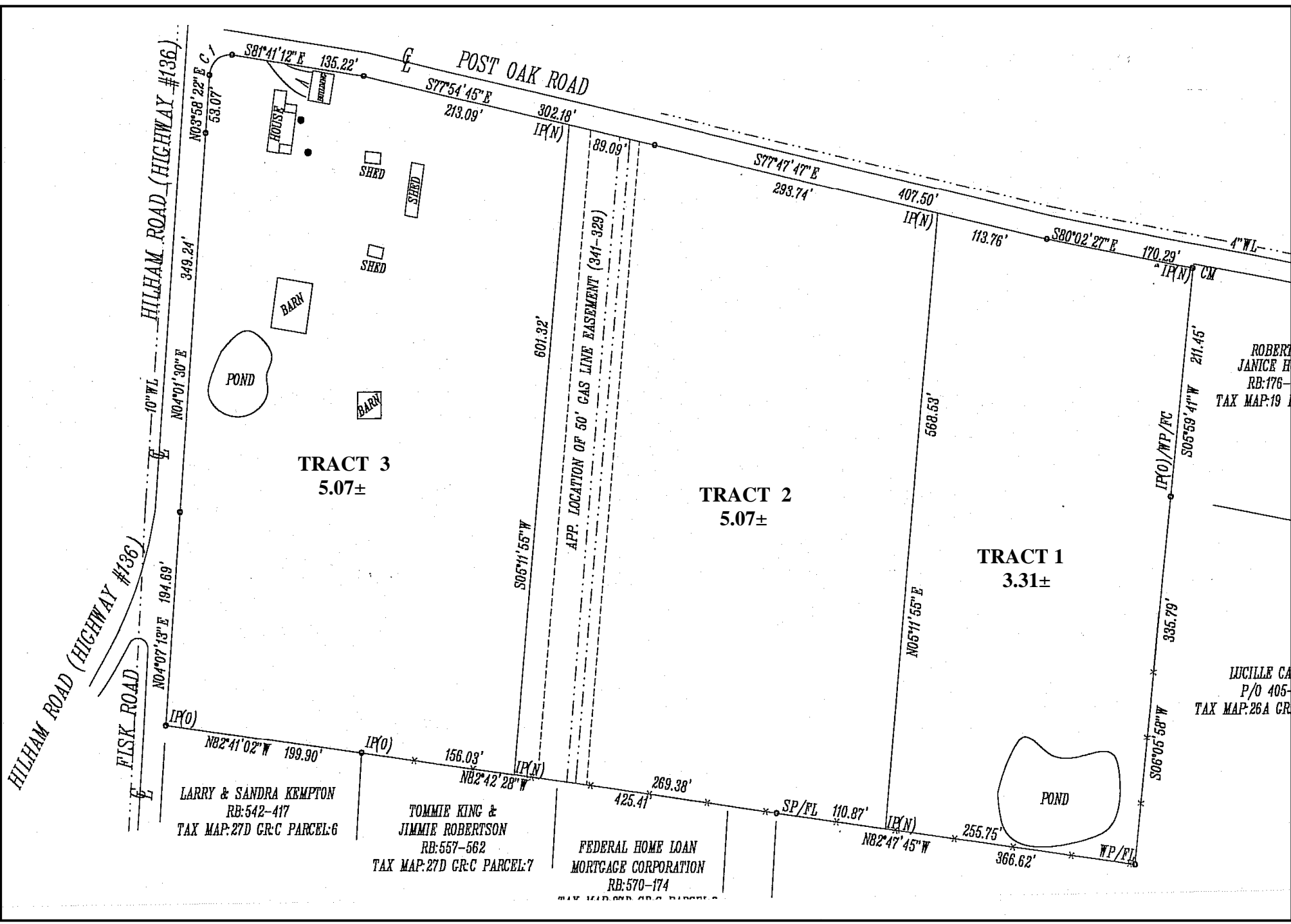
TAYS 

REALTY & AUCTION LLC

"AUCTIONS MEAN ACTION"



Firm LIC. #2056
Auct. LIC. #1013



HILHAM ROAD (HIGHWAY #136)

HILHAM ROAD (HIGHWAY #136)
 FISK ROAD

POST OAK ROAD

TRACT 3
5.07±

TRACT 2
5.07±

TRACT 1
3.31±

LARRY & SANDRA KEMPTON
 RB:542-417
 TAX MAP:27D G.R.C PARCEL:6

TOMMIE KING &
 JIMMIE ROBERTSON
 RB:557-562
 TAX MAP:27D G.R.C PARCEL:7

FEDERAL HOME LOAN
 MORTGAGE CORPORATION
 RB:570-174

ROBERT
 JANICE H
 RB:176-
 TAX MAP:19

LUCILLE CA
 P/O 405-
 TAX MAP:26A GR

10" WL
 N04°01'30"E 349.24'
 N03°58'22"E 53.07'
 S81°41'12"E 135.22'
 S77°54'45"E 213.09'
 302.18'
 IP(N)
 89.09'
 S77°47'47"E 293.74'
 407.50'
 IP(N)
 113.76'
 S80°02'27"E 170.29'
 4" WL
 IP(N) CM
 211.45'
 S05°59'41"W
 568.53'
 335.79'
 IP(O)/WP/FC
 N05°11'55"E
 601.32'
 S06°11'55"W
 APP. LOCATION OF 50' GAS LINE EASEMENT (341-329)
 156.03'
 IP(N)
 269.38'
 425.41'
 SP/FL 110.87'
 IP(N)
 255.75'
 366.62'
 WP/FL
 N04°07'13"E 194.69'
 N04°01'30"E
 N02°41'02"W 199.90'
 IP(O)
 N02°42'28"W
 N02°47'45"W
 366.62'
 POND
 POND
 HOUSE
 SHED
 SHED
 BARN
 BARN