

TAYS



REALTY & AUCTION LLC

"AUCTIONS MEAN ACTION"

1546 E SPRING ST STE B
COOKEVILLE TN 38506

(931) 526-2307

Heavy Equipment:

Cat D6D w/ 4-way blade
 Cat 943 Loader w/ GP Bucket
 Komatsu D-31P 6-way 20" pads (6187 hrs)
 Joy stick
 Komatsu D-31P 6-way wide track (736 hrs showing)
 Cat 416B Backhoe Turbo 4x4 Cab w/ heat (3860 hrs)
 Kubota L3450 w/ LA650 Loader 4x4 (1511 hrs)
 Kubota L3710 HST w/ LA682 4x4 Shuttle Shift (878 hrs)
 Gehl 6635 SXT Turbo Skid Steer (1430 hrs)
 Bobcat 7753 Skid Steer
 Bobcat Backhoe Attach Md. 709 w/12" & 24" buckets
 Bobcat 20 Skid Steer Auger w/12" Auger 24" & 36" Augers
 Bobcat Md. LT204 Skid Steer Trencher
 Bobcat Landscape Rake 5A 60
 Great ERRR- Skid Steer Power Grader
 Skid Steer- Boom Pole
 Skid Steer Pallet Forks 42"
 2) 5' Skid Steer Buckets
 Skid Steer Hi-cap Bucket 66"
 Skid Steer 5' Grapple Bucket
 Skid Steer Tracks/10" Tires
 Backhoe Pallet Forks 42"
 Case 36" HD Bucket /12" Bucket / 24" General Purpose Bucket /48" Dirt Bucket
 Tail Gator truck mounted forklift, 2 stage mast w/SS & Telescope, Kubota Eng. (1815 hrs.)
 Vermeer V-430A Trencher (1766 hrs.)
 Vermeer V-1850 walk-behind trencher

Laser Force 8' Hyd. P/U Scraper
 JD 318 Garden Tractor w/hyd. Deck & power steering

Trucks & Trailers:

79 International S/A Dump 210 Cummins 10 spd. w/ 10' Fontaine Bed
 86 Kenworth W900, 350 Cummins, 13 spd.22k rears
 78 Chevy El Camino(112k orig. mi., orig. motor & interior, 305 V8, factory air)
 99 Ford F-350 Crew Cab 7.3 diesel 6 spd, 2 wd, 250k mi
 88 GMC Sierra 3500 Cab & Chassis V-8 4 spd
 88 Ford F250XL (5 SP.,2 WD)
 85 Ford F350XL (4 SP,2 WD)
 88 Ford F350 5 spd.(utility box & hyd. winch)
 84 Ford Econoline 350 Diesel
 76 Ford Custom Van V-8
 90 Isuzu (auto, 126 hp diesel/379k mi.)
 87 Isuzu Box Truck (16' Box) 3.9L Diesel,175,026 mi.,5 spd. Transmission
 91 Hazelwood Mfg. Enclosed Trailer 8'x20'
 99 Miller Md. OT-32 24' Tilt Trailer 44.5K Air Brakes
 77 Dorsey 24' Alum Dump w/tarp
 22' Better Built Pintle Hitch el. Brakes 20k
 93 24' Pintle Hitch air brakes 20K
 90 31' Gooseneck Dual Tandem
 20' Gooseneck flat bed
 Portable Welding Trailer w/Jason Drill Press, Alum Toolbox
 12' utility trailer w/ramp
 Dodge Concord Motor Home Flagship w/ Onan El. Gen.

Landscape & Tillage Equip:

Reinco Straw blower w/tack attachment, JD 4 cyl Diesel
 Straw Blower w/ Wisconsin 4 cyl.Gas
 Arena dresser Landscape Machine 6' Agric AFMJ 70 Tiller
 Care-Tree tree digger 32"
 JD 2-bottom 14" Plow
 3 pt. Fertilizer Spreader
 2) 1 row Cultivators
 6' Gill Yard Box
 6' Big Ox Box Scraper
 6' Ford HD Blade
 Leinbach Line 5' Aerator; 4' Aerator
 Bush Hog 6' Box Blade
 7' Landscape Rake
 3 pt. disc, 22 blade
 3 pt. Bush Hog 5' Cutter HD
 8' Dunham cultipacker
 3 pt. Toolbar w/trailer mover
 2 Soil Mixers
Misc. Equip:
 Miller Bobcat 2256 (Onan 16 hp gas) welder/generator combo
 Miller S32P wire welder
 Miller HF 2510-1 High freq. arc starter & Miller Spectrum 250D Plasma Cutter
 Honda ES6500 Generator
 Con Vault 500 gal. Fuel Storage Tank
 7' 1 T Dump Bed
 Horse Drawn 8-disc
 3 pt. Boom Pole
 Steel Cable,
 Diamond Plate Tool Box
 100 gal. Transfer Tank w/12v Pump
 Chain Link Gates, Conc Wire
 Chain Link Gate Opener, Misc. Hand Tools

Mid-Tenn Nursery, Cookeville

RAIN
OR
SHINE

RAIN
OR
SHINE

INVENTORY REDUCTION & EQUIPMENT AUCTION

LOCATION: 513 Cora Rd.,
 Cookeville From I-40 Exit 286,
 North on Willow Ave. 3.3 Mi., left
 on Gainesboro Grade 1.3 Mi, left
 on Benton Young Rd. 0.7 Mi, left
 on Cora Rd. See Auction Signs

FRIDAY & SATURDAY OCTOBER 2 & 3 9AM

★ Inventory reduction of Nursery Stock ★ Equipment ★

Huge Inventory of Perennials, Trees & Shrubs. Be prepared to spend all day Friday & Saturday!!!



25,000 PLANTS: 1-30 GAL.

DETAILS INSIDE !!!!

AUCTIONERS NOTE:Mr Bullington is needing space for expansion, making this a great opportunity for the individual or landscaper to buy nursery stock or equipment. Don't Miss This Auction!!!

Terms: NURSERY STOCK: 10% buyers premium. EQUIPMENT: 10% buyers premium on each item up to \$15,000. 5% buyers premium on items over \$15,000. Cash or good check

Announcements made day of sale take precedence over previously printed matter. Information believed to be correct but not guaranteed.

www.taysauctions.com

1546 E SPRING ST STE B
COOKEVILLE TN 38506

(931) 526-2307

TAYS



REALTY & AUCTION LLC

"AUCTIONS MEAN ACTION"



Firm LIC. #2056
Auct. LIC. #1013

www.taysauctions.com

1546 E SPRING ST STE B
COOKEVILLE TN 38506

(931) 526-2307

TAYS



REALTY & AUCTION LLC

"AUCTIONS MEAN ACTION"



Firm LIC. #2056
Auct. LIC. #1013

Friday & Saturday October 2 & 3 @ 9AM

**SALE ORDER- Friday 9am Nursery Stock
2pm Equipment
Saturday 9am Nursery Stock**

INVENTORY REDUCTION & EQUIPMENT AUCTION

LOCATION: Mid-Tenn Nursery. 513 Cora Rd., Cookeville From I-40 Exit 286, North on Willow Ave. 3.3 Mi., left on Gainesboro Grade 1.3 Mi, left on Benton Young Rd. 0.7 Mi, left on Cora Rd. See Auction Signs

HUGE Auction: Perennials, Trees, & Shrubs

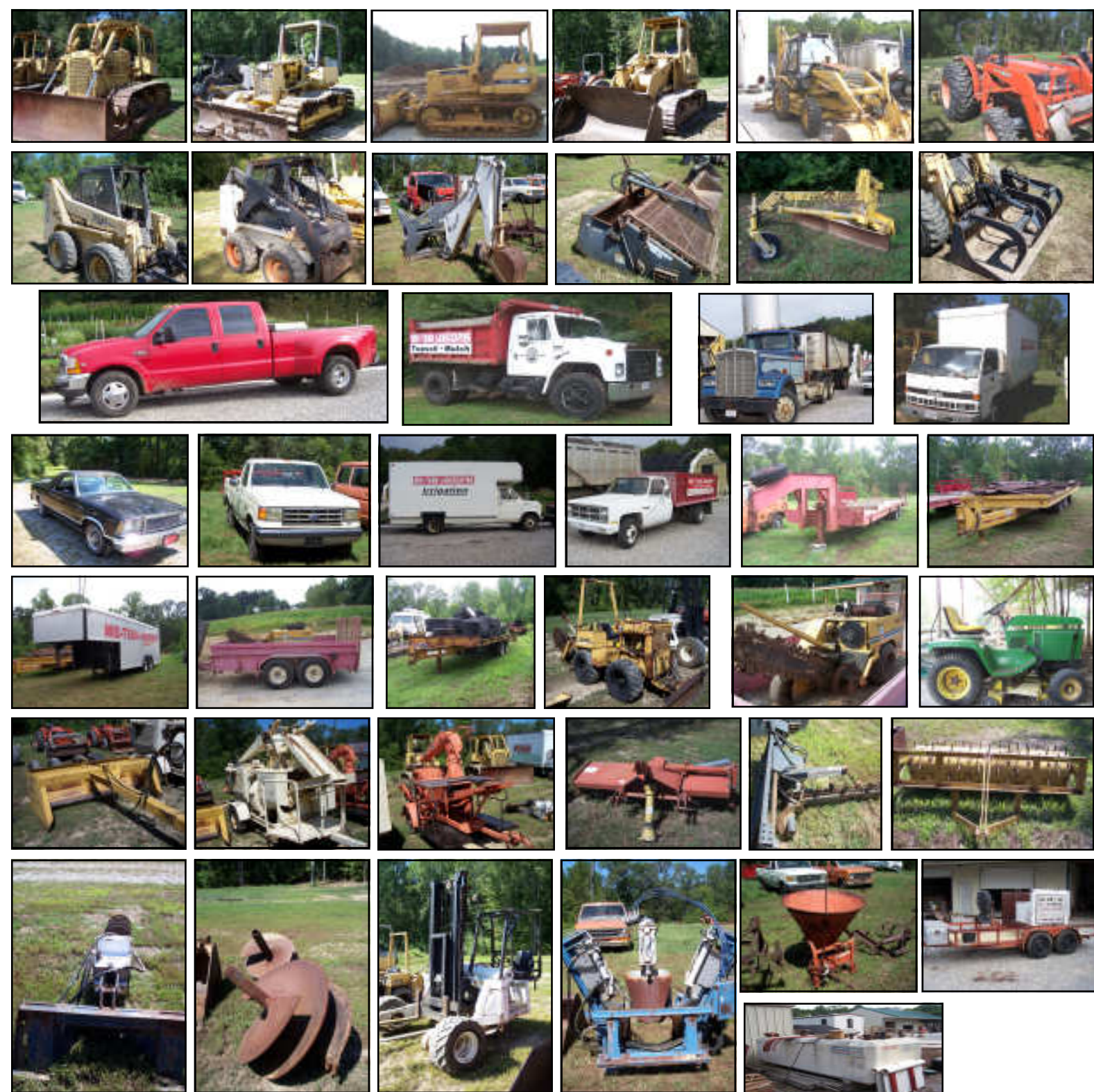
- Shade Perennials: Hostas, Coral Bells
- Sun Perennials: Daylilies, Sedum, Daisies
- Knock Out Roses (All Colors)
- Shade & Ornamental Trees & Shrubs
- Ornamental, Evergreen, (Ten varieties of Holly, Boxwood, Yew, Skip Laurel) & Flowering Shrubs (Azalea, Rhododendron)
- Fruits (Blackberry, Raspberry, Grapes, Blueberry)
- Fruit trees
- **25,000 PLANTS: 1-30 GAL.**



25,000 PLANTS: 1-30 GAL.

Terms: NURSERY STOCK: 10% buyers premium. EQUIPMENT: 10% buyers premium on each item up to \$15,000. 5% buyers premium on items over \$15,000. Cash or good check day of sale. Positive ID required to obtain bid number.

Equipment (Sells at 2pm)



Call our office for info or visit our Website at www.taysauctions.com

Announcements made day of sale take precedence over previously printed matter. Information believed to be correct but not guaranteed.